



# GRAPHIC PRODUCTS INC.

FULL-LINE NETWORK

DESIGNING

ENGINEERING

PROTOTYPING

TOOLING

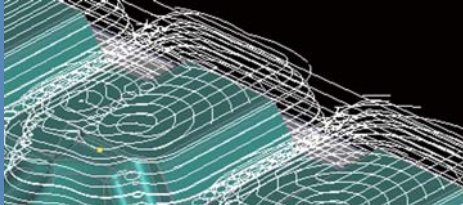
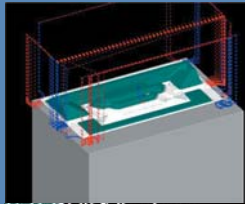
MOLDING

## Product Development Services

Headquarter



### Our Outstanding technologies - From the precision electrical parts



We have a skilled workers-like manufacturing technique because we use an unique process on developing the system - we have tests and evaluations of NC data genelated new functions with a machining center in our showroom. we examine the developing achievement of the software with a real cutting work, and give feedback to our development division with the needs from customers to make use of the improvement qualities.

We provide these technical informations as "The Guide for Cutting Work".

For example, in the case of the precision electrical part, we are introducing the direct cutting sample (SKD11 [58HRC] work with minimum tool). This case includes the minimum wide 0.28mm and 1mm depth with the bottom rounded. It is infinitely-thin shape not to deal with an electric discharging. This guide includes details how to set the CAM palameter, check the tool and the interference for an optimization, and so on. It helps mold & die makers a great deal in their production site.

These are our advantages - The accuracy of NC data based on the cutting performance with a machining center and technical informations by utilizing the result.



### Who We Are

GRAPHIC PRODUCTS INC. is a leading CAD/CAM software vendor in the mold & die industry. Since establishing, we've contributed to provide solutions bringing our customers to a high precision and a high effective mold & die machining, and a quick delivery.

Recently the mold & die makers are requierd higher-level results from product makers or parts makers, about the deadline, costs, an adapting to the global business, and overseas and domestic competition in increasing. We support the mold & die market by providing developing and servicing CAM software and responding to the needs - the high-added value and quick delivery. It is our mission for a manufacturing market to propose sophisticated and effective solutions.

### What We Do

Our CAM software, "tools" series, is supported by the overseas and domestic customers as a high-end CAM realizing a high accuracy cutting work. We have fulfilling technical services for our customers - "Version Up Seminar", delivering technical informations via internet, and so on.

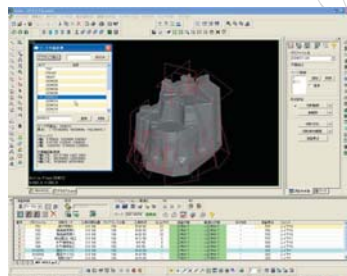
## Providing our manufacturing solutions in the mold & die industry

### CAM Software

GRAPHIC PRODUCTS INC. provides high performance CAM softwares with a variety of options - the staple of CAM software "tools V3", "tools MX" for 5-axis MC, "tools VIS-A-VIS" having a self-accumulated database function, and "CraftMILL" for Cutting RP to meet demands in the mold & die industry.

### tools *MX*

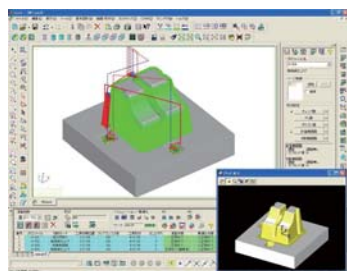
"One-Setup Complete Machining"; 3 axis machining added 2 axis, providing more efficient and high accuracy process of mold & die manufacturing with various cutting patterns.



tools MX

### tools *V3*

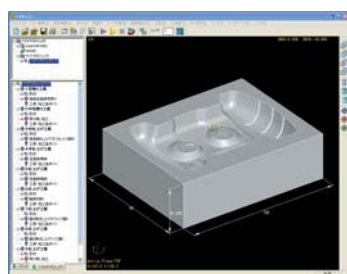
tools V3 meets demands of operators, from beginners to the people who has a lot of experiences about CAM systems with the high-level surface modering function.



tools V3

### tools *VIS-A-VIS*

tools VIS-A-VIS accumulates the know-how of skillful operators by a self-accumulated database function. Users can utilize the feature of the machining center and the knowledge of highly-skilled operators.



tools VIS-A-VIS

### CraftMILL

CraftMILL is developed for beginners of the machining. CraftMILL is designed to be easily understandable with auto controll functions.



CraftMILL

### Software List

tools MX (GRAPHIC PRODUCTS INC.)  
toolsV3 (GRAPHIC PRODUCTS INC.)  
tools VIS-A-VIS (GRAPHIC PRODUCTS INC.)  
Craft MILL (REAL FACTORY INC.)



**Alpha Holdings INC.**

Alpha Holdings Group

GRAPHIC PRODUCTS INC.

[Headquater]

Ebisu Business Tower 15F, 1-19-19 Ebisu

Shibuya-ku, Tokyo 150-0013

Tel: +81-3-5793-5001 / Fax: +81-3-5793-5003

[Tokyo Office]

〒150-0013

UNOSAWA Tokyu bldg. 4F, 1-19-15 Ebisu

Shibuya-ku, Tokyo 150-0013

Tel: +81-3-5793-5333 / Fax: +81-3-5793-5331

[North Kanto Office]

Sumitomo Seimei Ota bldg. 3F, 1183-1 Iida-cho

Ota-shi, Gunma 373-0851

Tel: +81-276-40-1921 / Fax: +81-276-40-1922

[Nagoya Office]

1-58 Takayashiro Meito-ku, Nagoya-shi, Aichi 465-0095

Tel: +81-52-771-5141 / Fax: +81-52-771-5599

[Osaka Office]

Nihon Health bldg., 1-12-50 Esaka-cho

Suita-shi, Osaka 564-0063

Tel: +81-6-6389-4831 / Fax: +81-6-6389-4836

Website: [www.graphicproducts.co.jp](http://www.graphicproducts.co.jp)